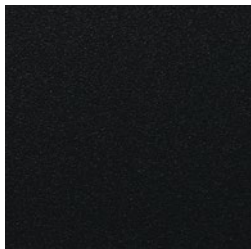


GESTALTUNGSVIELFALT FÜR DIE SIDE



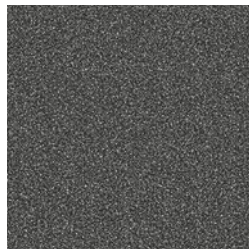
Schwarz Ulti-Matt
(ähnlich RAL 9011)



Anthrazitgrau glatt
(ähnlich RAL 7016)



Anthrazitgrau genarbt
(ähnlich RAL 7016)



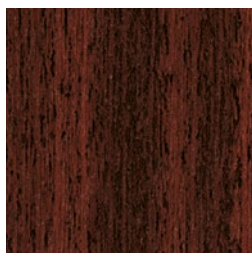
ähnlich DB 703



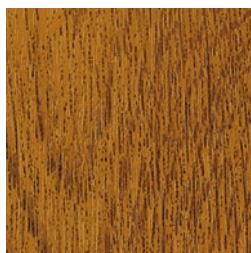
Basaltgrau glatt
(ähnlich RAL 7012)



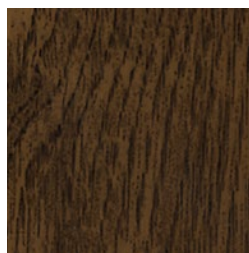
Braun Dekor genarbt



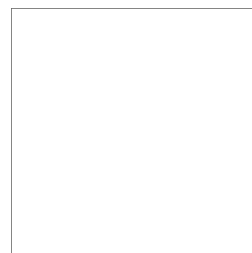
Mahagoni genarbt



Golden Oak genarbt



Nussbaum genarbt



Weiß
(ähnlich RAL 9016)